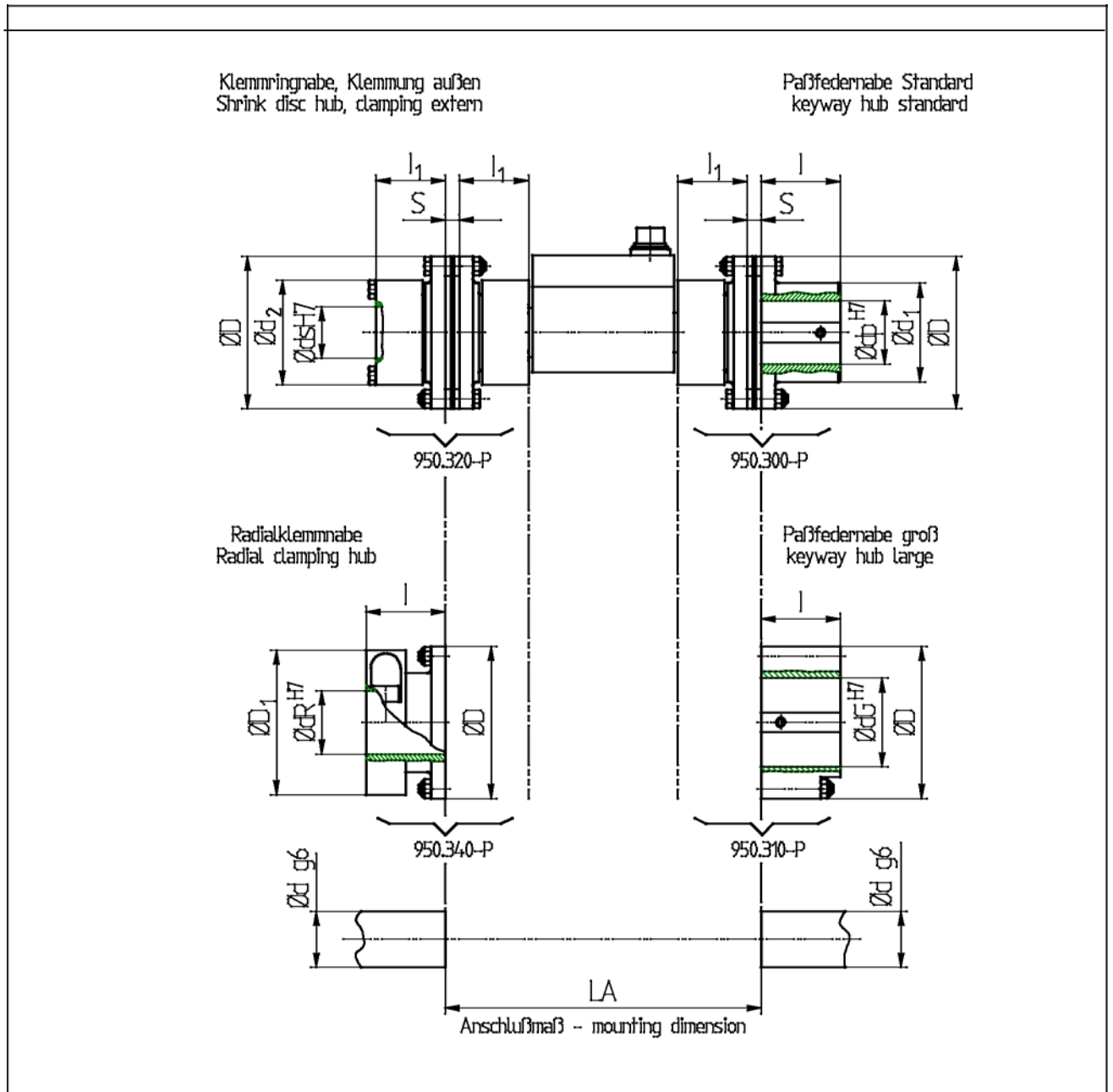


Drehmomentsensor Typ DR-2 mit Kupplung 950.3_0-P

torque sensor Typ DR-2 with coupling 950.3_0-P



| Messbereich nominal torque [Nm] | Typ 95.. Größe size | Abmessungen – dimensions [mm] | | | | | | | | | | | | | | | |
|--|------------------------------|-------------------------------|-----|-----|-----|-----|-----|-----|-----|-----|-----|----|----|----|----|-----|-------|
| | | D | | ds | | dP | | dR | | dG | | d1 | d2 | l | l1 | s | LA |
| | | min | max | min | max | min | max | min | max | min | max | | | | | | |
| 50 | 16 | 77 | 73 | 14 | 26 | 16 | 32 | 25 | 35 | 30 | 45 | 50 | 53 | 40 | 35 | 7,1 | 134,2 |
| 100 | 16 | 77 | 73 | 14 | 26 | 16 | 32 | 25 | 35 | 30 | 45 | 50 | 53 | 40 | 35 | 7,1 | 135,2 |
| 200 | 25 | 89 | 84 | 20 | 36 | 20 | 40 | 30 | 40 | 35 | 55 | 60 | 64 | 45 | 40 | 7,2 | 154,4 |
| 500 | 64 | 123 | 115 | 30 | 45 | 30 | 55 | 35 | 55 | 55 | 75 | 80 | 84 | 65 | 50 | 9,6 | 179,2 |

Bei Bestellung bitte immer den gewünschten $\varnothing d$ angeben

Please specify requested bore d at order.