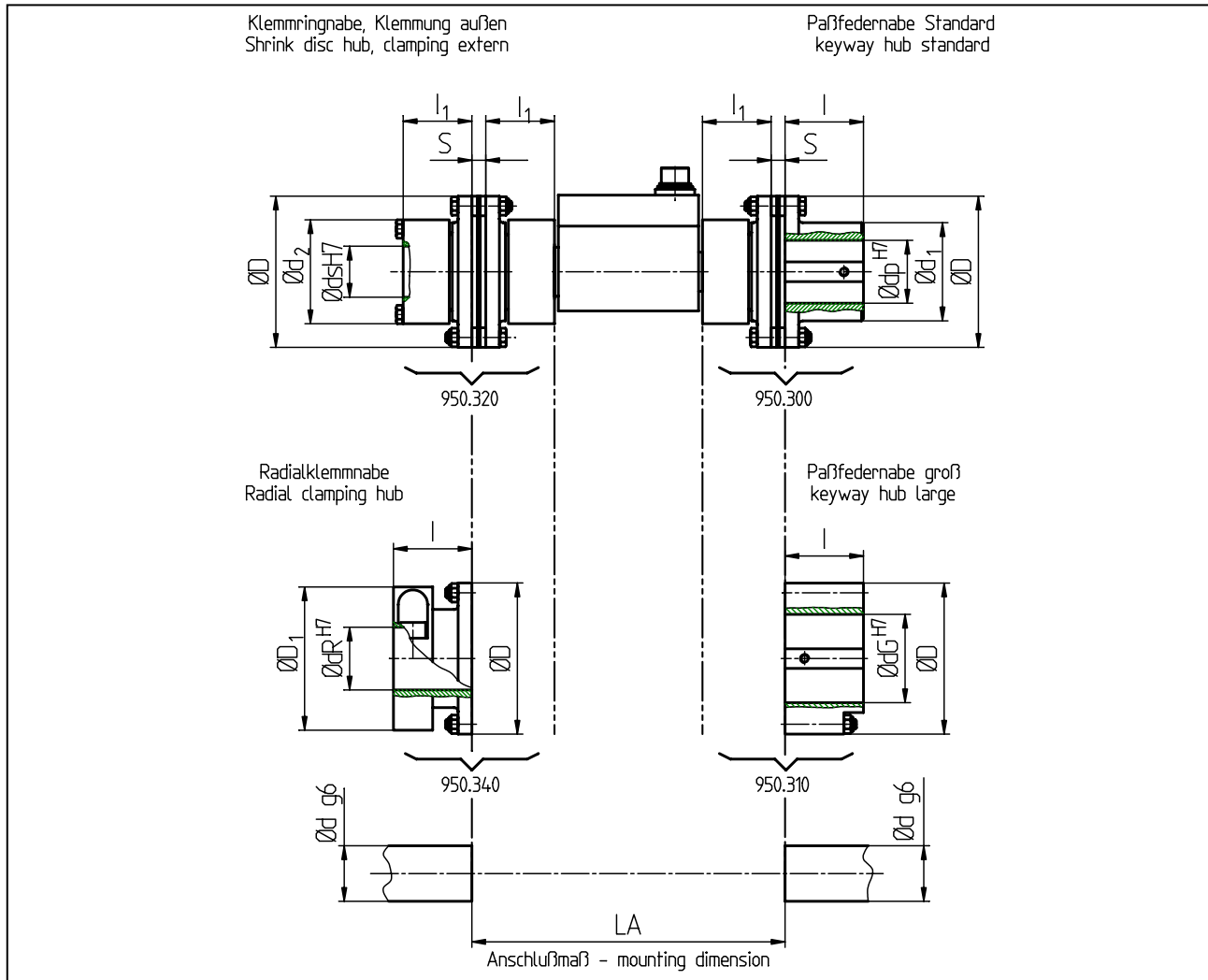


Torque sensor type DR-2208, 2112, 2112R with coupling 950.3_0 free floating



TECHNISCHE DATEN - specifications

Type 95...

size	nominal torque		max. speed	
	M_{nom} [Nm]		N_{max} [min ⁻¹]	
16	160		13600	
25	250		11800	
64	640		8500	
100	1000		7300	
300	3000		6200	
500	5000		5200	
1400	14000		3800	

Balancing quality of the coupling Q 6,3 according to VDI-characteristics 2060 with medium speed.

nominal torque [Nm]	Typ 95.. size	- dimensions [mm]															
		D	D1	ds		dP		dR		dG		d1	d2	l	l1	s	LA
				min	max	min	max	min	max	min	max						
5 / 100	16	77	73	14	26	16	32	25	35	30	45	50	53	40	35	7,1	159,7
20 / 200	25	89	84	20	36	20	40	30	40	35	55	60	64	45	40	7,2	177,9
50 / 500	64	123	115	30	45	30	55	35	55	55	75	80	84	65	50	9,6	202,7
100/1000	100	143	135	35	55	35	70	40	68	65	95	100	104	75	55	10	282
200/2000	300	167	x	50	85	45	90	x	x	x	X	121	164	90	75	11,2	399,4
500/5000	500	198	x	60	100	55	105	x	x	x	x	141	198	100	90	12	401
10000	1400	274	x	80	140	75	140	x	x	x	x	190	274	150	130	16	502

Please specify requested bore Ø d at order. x = nicht lieferbar – not available